



NORTHERN LIGHTS
RAIL

RAIL SERVED DEVELOPMENT SITE

Serviced By
Northern Lights Rail



Glowa Junction / MELFORT

1060 SK-41A Business, Melfort, SK, Canada

Highlights

Rail-served industrial development site available near Melfort, SK. Flexible, custom rail service available from Northern Lights Rail in close proximity to the CN interchange in Melfort, SK. Ideal for fertilizer storage/sales or other industrial use.

Building your facility or loading site on a short line railway is a cost-effective way to access the advantages of rail transportation while retaining the accountability and support of a smaller transportation provider. Let us help you streamline your operations, reduce your transportation costs, and bring your products to the world.

28 cars

Rail Frontage

Property Details

Acres / 21 acres

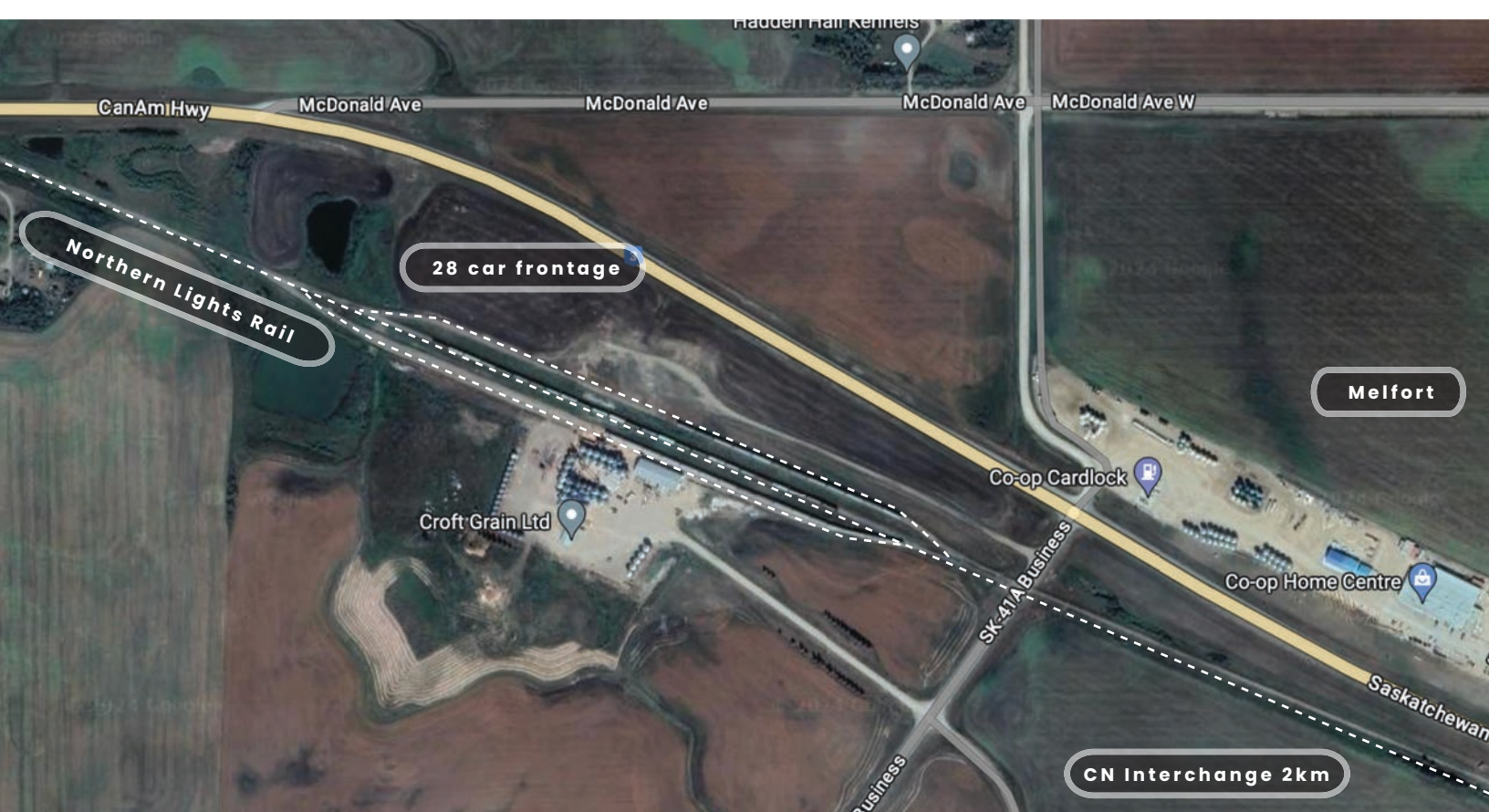
Available For / For Lease

Utilities

Electrical to property line / Yes

Water on site / Yes

Natural gas available / Yes



Class 1 Rail Access

Melfort / 2kms

Highway Access

SK 3 / adjacent to property

Communities

Melfort / 2kms

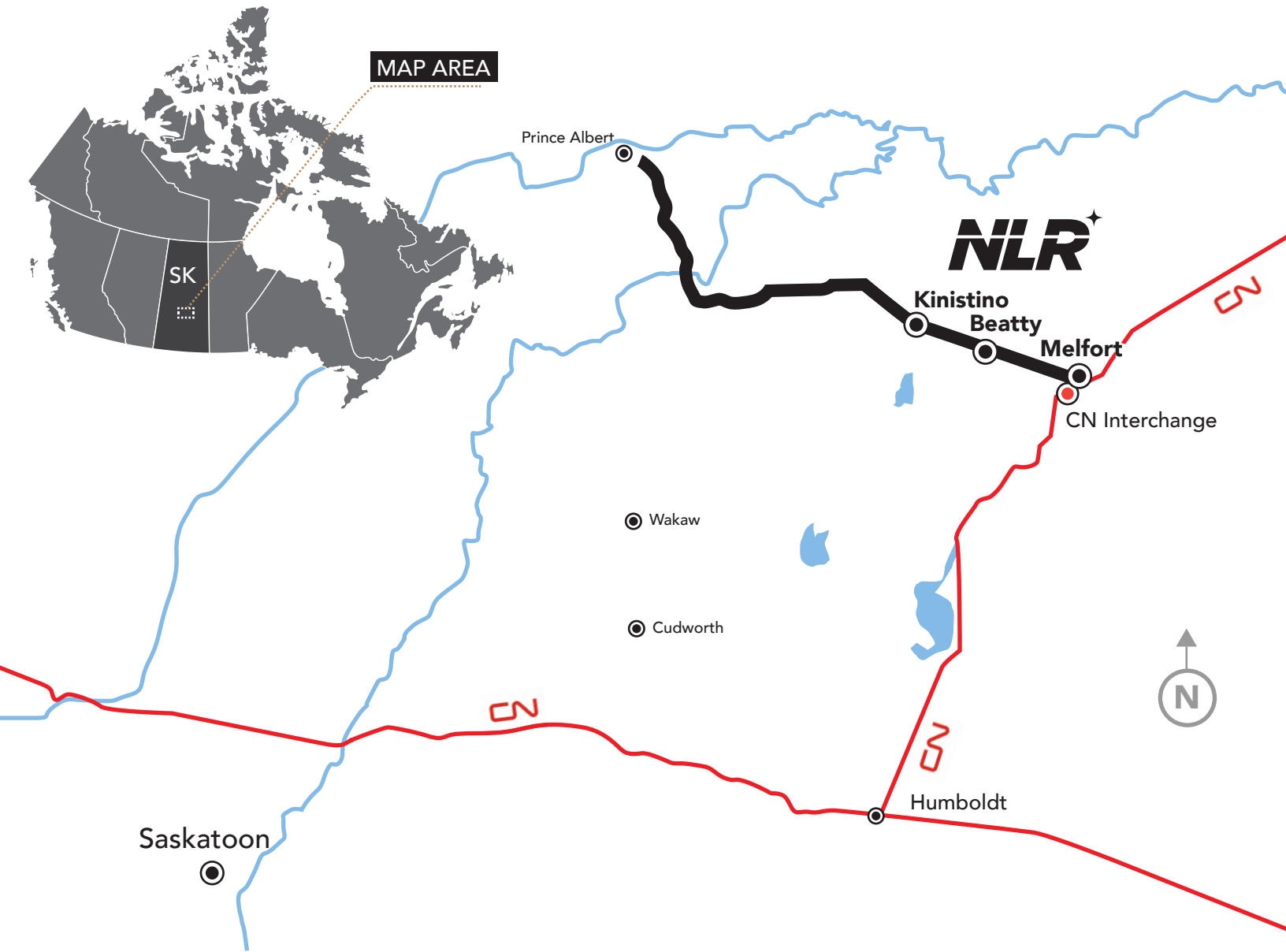
Kinistino / 28kms

Prince Albert / 92kms

Suggested Use

Commodities, Fertilizer.







NLR

**NORTHERN LIGHTS
RAIL**

306-921-8988

northernlightsrail@gmail.com

Box 934 Kinistino, SK S0J 1H0